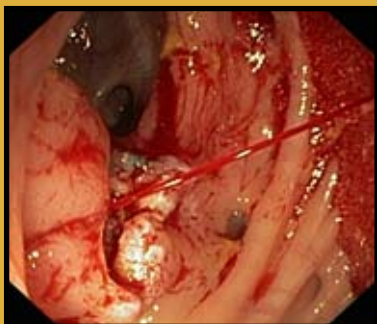
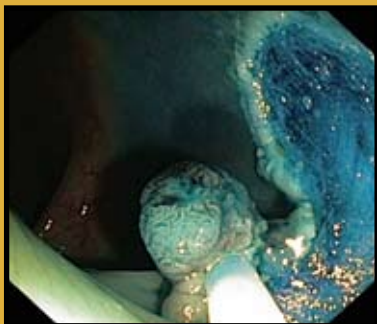




Westmead Interventional Endoscopy Symposium

Thursday 21 - Friday 22 February 2008
Lowenthal Auditorium, Westmead Hospital
Sydney, Australia

REGISTRATION BROCHURE



International Faculty



Prof Horst Neuhaus



Dr Yutaka Saito

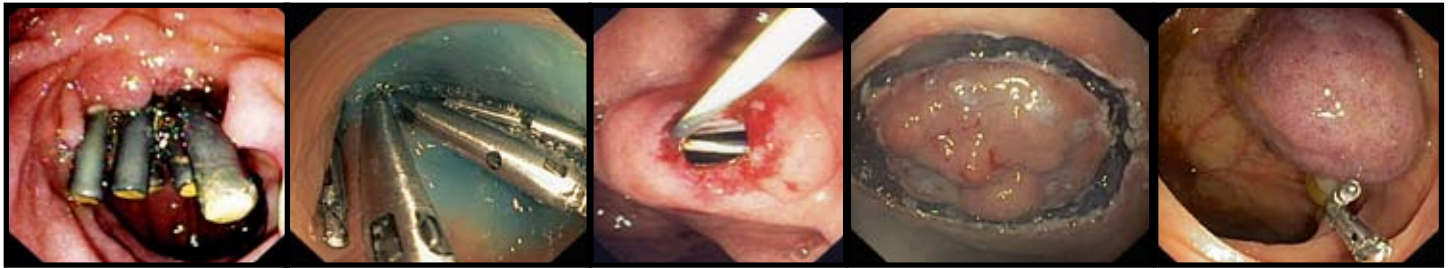


Prof Prateek Sharma

- Barrett's
 - Detection of inconspicuous neoplasia and dysplasia
 - Endoscopic therapy for mucosal cancer
 - Total mucosectomy
 - Radio-frequency ablation
- Enhanced endoscopic imaging modalities
- EMR and ESD in the colon and upper GI
 - Current concepts and new techniques
- Diagnostic and interventional endoscopic ultrasound
- ERCP: Complex and basic therapeutics
- Direct cholangioscopy
- Endoscopic haemostasis: the old and the new
- Colon capsule endoscopy



REGISTER ON LINE AT
www.e-Kiddna.com.au/westendoreg



Welcome

The last few years have seen advances in both diagnostic and therapeutic Endoscopy that could scarcely have been imagined a decade ago and the speed of innovation continues at a pace not previously witnessed in Endoscopy.

Real time detection of mucosal histology is now possible and thus as a corollary, mucosal cancer in the oesophagus and stomach can now be treated safely and curatively by endoscopic means on an outpatient basis, avoiding major surgery with its substantial risks. Similarly, extensive outpatient mucosal resection beyond the hemi-circumference is now possible in the colon. Techniques of EMR continue to evolve, enhancing both safety and efficacy and so it is now more readily accessible to Endoscopists outside of specialist referral centers. The small bowel can now be examined well beyond the previous depths of push techniques by balloon enteroscopy. Capsule endoscopy, which started in this organ, is extending its utility to the colon. This is but a few and the list goes on.....

With these thoughts in mind, I cordially invite you to attend The Westmead Interventional Endoscopy Symposium February 2008. An impressive international faculty has been assembled and in conjunction with leading Australian clinicians through the platform of a live case interactive format and 'State of the Art' lectures, both the fundamentals of these new and evolving techniques as well as their subtle nuances will be demonstrated. The program has been carefully designed and will be relevant and informative to all those involved in Endoscopic practice, be that primarily diagnostic, complex interventional or surgical.

Late summer is a beautiful time to visit Sydney and a gala harbour side dinner on the Thursday evening should confirm this. As space in the auditorium is limited, I urge you to register early so that you may attend this important educational event.

Yours sincerely

Michael Bourke
Chairman Westmead Interventional Endoscopy Symposium 2008
Director Gastrointestinal Endoscopy Westmead Hospital

Welcome to Nurses

It is with great pleasure that we invite all nurses involved with Gastrointestinal and Endoscopy Services to the Westmead Interventional Endoscopy Symposium. Presentations and live demonstrations by renowned International and Australian faculty with the latest endoscopic techniques will take place over two full days.

For nurses, the symposium will commence with a 'hands on' workshop on Wednesday 20th February with topics to include Endoscopic Mucosal Resection, Barrett's Oesophagus, Gastrointestinal Bleeding, ERCP and more.

Those who wish, may register for the nurses' half-day workshop only. Single day and two day symposium registration includes the half day workshop - please indicate your preference on your registration.

As numbers are limited please register early to avoid disappointment. We look forward to seeing you in February.

Yours sincerely

Ellie McCann
Nurse Unit Manager, Westmead Endoscopy Unit

International Faculty



Prof Horst Neuhaus, Evangelisches Krankenhaus Düsseldorf, The University of Düsseldorf, Germany
Professor Horst Neuhaus is the Chief of the Department of Internal Medicine of the Evangelisches Krankenhaus Düsseldorf, teaching hospital of the University of Düsseldorf. He is currently serving as the Treasurer of the European Society of Gastrointestinal Endoscopy and Councillor of the German Society of Gastroenterology. In 2003, he was President of the German Society of Endoscopy and Imaging Procedures. Prof Neuhaus is the co-editor of the journal "Endoscopy". He has been director on the annual International Symposium on Diagnostic and Therapeutic Endoscopy in Düsseldorf since 1999. He has a wide field of clinical and scientific interests in diagnostic and therapeutic Endoscopy and is acknowledged as an international opinion leader. He is frequently invited to demonstrate and lecture at endoscopy symposia around the world and has numerous peer reviewed publications.



Dr Yutaka Saito, Division of Endoscopy, National Cancer Center Hospital, Tokyo, Japan

Dr Yutaka Saito is a leading member of the consultant staff at the national cancer center in Tokyo. His clinical and research interests focus on techniques for the diagnosis and therapy of mucosal malignancy in the upper and lower digestive tract. He has been one of the pioneers in developing the techniques of submucosal dissection. He is frequently invited to demonstrate and lecture at international endoscopy symposia.



Prof Prateek Sharma, University of Kansas School of Medicine, Kansas City, USA

Prateek Sharma, M.D. is Professor of Medicine in the Division of Gastroenterology and Hepatology, and the Director of the Fellowship Training Program at the University of Kansas School of Medicine, Kansas City, USA. Prof Sharma's research has focused on upper gastrointestinal diseases including Barrett's esophagus, esophageal cancer and gastroesophageal reflux disease. He has over 120 publications including original articles and book chapters related to these topics and has presented at major national and international meetings. He recently co-edited a book entitled "Barrett's Esophagus & Esophageal Adenocarcinoma" and has received the American College of Gastroenterology Governors Award for Excellence in Clinical Research. He is acknowledged as one of the foremost international leaders in the field of Barrett's oesophagus.

The attendance of the international faculty has been graciously supported by our gold sponsors: Olympus, Boston Scientific and Cook Medical.



Conference Program

Nurses Workshop - Wednesday 20 February 2008

1300	Registration Opens
from 1330	GIT Bleeding Presentation and Demonstration of Devices
	Principles of Mucosal Resection and Large Polypectomy Complications
1430 - 1500	Afternoon Tea
	Barrett's Oesophagus Assessment and Treatment - What Is It? - Why Do It? - How To Do It?
	ERCP Principles and Therapeutic Equipment
1600 - 1645	Bringing It All Together and Making It Work For You (Short Presentations and Panel Discussion)
1645 - 1700	Cocktails
	* all presentations will be 30 minute rotating concurrent sessions * all sessions include a 'hands on' workshop component with equipment

Day One - Thursday 21 February 2008

0800	Registration Opens
0830 - 0835	Official Conference Open and Welcome Dr Michael Bourke, Director, Gastrointestinal Endoscopy Westmead Hospital
0835 - 0850	Barrett's Oesophagus: Risk Stratification and Surveillance Prof Prateek Sharma, University of Kansas School of Medicine, Kansas City, USA
0850 - 1030	Live Endoscopy
1030 - 1100	Morning Tea
1100 - 1115	Endoscopic Treatment of Barrett's Dysplasia and Mucosal Cancer Prof Horst Neuhaus, Chief of Medicine, Evangelisches Krankenhaus, University of Düsseldorf, Germany
1115 - 1300	Live Endoscopy
1300 - 1400	Lunch
1400 - 1530	Live Endoscopy
1530 - 1600	Afternoon Tea
1600 - 1630	Detection, Classification and Management of Colonic Neoplastic Lesions in Japan – Insights For Western Endoscopists Dr Yutaka Saito, National Cancer Center Hospital, Tokyo, Japan
1630 - 1700	Colonoscopy and Colonic Pathology Quiz
1700	Close
1900	Conference Dinner (by pre-registration only)

Day Two – Friday 22 February 2008

0800	Registration Opens
0845 - 0900	The Sessile Serrated Adenoma: An Alternative Pathway For Colorectal Carcinogenesis TBA
0900 - 1030	Live Endoscopy
1030 - 1100	Morning Tea
1100 - 1300	Live Endoscopy
1300 - 1400	Lunch
1400 - 1530	Live Endoscopy
1530 - 1600	Afternoon Tea
1600 - 1630	Expert Insights Into The Future of Endoscopic Imaging and Intervention Prof Horst Neuhaus, Chief of Medicine, Evangelisches Krankenhaus, University of Düsseldorf, Germany
1630 - 1645	Awards For The Quiz Winners
1645	Closing Remarks Dr Michael Bourke, Director, Gastrointestinal Endoscopy Westmead Hospital



Westmead Endoscopy would like to thank our sponsors:

GOLD SPONSORS



SILVER SPONSORS



BRONZE SPONSORS



Course Convenors:

Westmead Hospital
Dr Michael Bourke, Director Gastrointestinal Endoscopy
Dr Stephen Williams
Ms Ellie McCann, Nurse Unit Manager, Endoscopy

Conference Organiser and Secretariat

For further information please contact Leanne Mulheran
e-Kiddna Event Management
Ph +61 7 5548 6199 | Fax +61 7 3337 9855
email: rsvp@e-Kiddna.com.au



Attendance Verification: A Certificate of Attendance will be available from the Registration Desk

Disclaimer: Information contained in this brochure was correct at the time of publication. However, it may be necessary, due to unforeseen circumstances for sections to be changed. The organisers will endeavour to keep changes to a minimum.

REGISTRATION FORM

WESTMEAD INTERVENTIONAL ENDOSCOPY SYMPOSIUM

THURSDAY 21 - FRIDAY 22 FEBRUARY 2008

TAX INVOICE ABN 86 135 880 988

Please complete this registration form and fax back to 07 3337 9855

OR REGISTER ON LINE AT: www.e-Kiddna.com.au/westendoreg

SECTION A: PERSONAL DETAILS

DELEGATE SPONSOR SPEAKER
TITLE: Dr Prof Sir Mr Mrs Ms Miss Other
(Please Circle)

FAMILY NAME

GIVEN NAME Male/Female
(Please Circle)

NAME FOR BADGE
(If different from above)

POSITION HELD (If applicable)

INSTITUTION/ORGANISATION/COMPANY

MAILING ADDRESS

..... POST CODE

PHONE () FAX ()

MOBILE

EMAIL
(all correspondence will be via email if possible, including tax invoices)

DIETARY REQUIREMENTS

May we include your contact details on the final delegate listing? YES NO

PAYMENT OF FEES

SECTION B: REGISTRATION FEES \$

SECTION C: ACCOMMODATION DEPOSIT \$
(Not Applicable If Credit Card Provided)

TOTAL FEES PAYABLE \$
All fees quoted are in Australian dollars and include GST.

PAYMENT BY: CHEQUE BANK DRAFT/MONEY ORDER

VISA MASTERCARD

DIRECT DEPOSIT / EFT
(banking details will be reflected on invoice)

CARD No _____

NAME ON CARD

EXP DATE ___ / ___ SIGNATURE

PAYMENT - All costs quoted are GST inclusive and a GST invoice will automatically be forwarded with confirmation of registration and other fees paid. Payment of total fees will be accepted by Personal or Company Cheque, Bank Draft, Money Order in Australian Dollars or by Credit Card. All Cheques/Drafts/Money Order should be made payable to: e-Kiddna Event Management

SECTION B: REGISTRATION FEES

(Please tick the appropriate box and circle the appropriate amount)
Before 14 December Before 25 January After 25 January

Full 2 Day Registration

Physician \$480 \$560 \$650

Trainee \$350 \$420 \$510

Nurse \$300 \$370 \$460

I will be attending the nurses workshop on Wed 20 Feb

1 Day Registration - Thursday / Friday (please circle)

Physician \$300 \$340 \$400

Trainee \$200 \$240 \$300

Nurse \$150 \$200 \$250

I will be attending the nurses workshop on Wed 20 Feb

1/2 Day Registration (NURSES ONLY Wednesday 20 February)

Nurse \$ 50 \$ 80 \$120

Official Conference Dinner Thursday 21 February

Registrant \$ 40 n/a \$ 60

Partner \$100 n/a \$120

PARTNER'S NAME

SPONSOR \$NIL

TOTAL REGISTRATION FEES \$

SECTION C: ACCOMMODATION

A minimum deposit equivalent to one room night is needed to guarantee your booking. Full payment for room only costs can be made in advance if that is more convenient. If deposit is paid by credit card, e-Kiddna Event Management will not process payment for accommodation, credit card details will be forwarded to Four Points by Sheraton as guarantee. Rooms are limited. Please reserve accommodation as follows:

FOUR POINTS BY SHERATON

City Side Room \$295/room/night including 1 breakfast

Harbour View Room \$325/room/night including 1 breakfast

IN DATE: / 02 / 2008 OUT DATE: / 02 / 2008

TOTAL ACCOMMODATION DEPOSIT \$

SECTION D: COACH TRANSFERS

Please tick which days you would like to be included in the Conference coach transfers from Four Points by Sheraton Hotel to Westmead Hospital.

Thursday 21 February 2008 Friday 22 February 2008

No coach transfers required

CANCELLATION POLICY - All cancellations must be made in writing to the Conference Secretariat. Cancellations made before 21 January 2008 will incur a 25% penalty. There will be no re-funds after this date, although substitute delegates are welcome.

PLEASE MAIL OR FAX THIS COMPLETED FORM WITH PAYMENT TO:
e-Kiddna Event Management, PO BOX 411, ANNERLEY QLD 4103
PH: (07) 5548 6199 FAX: (07) 3337 9855
EMAIL: rsvp@e-Kiddna.com.au

REGISTRATION INFORMATION

Accommodation

Four Points by Sheraton, Darling Harbour

161 Sussex Street • Sydney

Located in Sydney's central business district and overlooking Darling Harbour, Four Points by Sheraton is just a short walk from the major entertainment and shopping districts including Pitt Street Mall, Queen Victoria Building, and Chinatown. Take a stroll and explore! Check In from 3pm and check out by 11am. Special room and breakfast rates have been negotiated and must be booked through e-Kiddna Event Management on the registration form.

City Side Room	\$295/night inclusive of one buffet breakfast
Harbour View Room	\$325/night inclusive of one buffet breakfast
Additional Breakfast	\$33/person

Travel Arrangements

Coach - coaches will transfer delegates from **Four Points by Sheraton Hotel** to Westmead Hospital each day. Travel time is approximately 40-50 minutes. Coaches will return delegates to Four Points by Sheraton at the close of the conference each day.

Departure Times:

Thursday 21 February - 7.15am

Friday 22 February - 7.30am

Train - Westmead train station is located a short walk from Westmead Hospital with frequent services. Please plan your journey via the transit website: www.cityrail.info

Car - There is limited on-site car parking at \$6/day

Directions to Lowenthal Auditorium

From the Westmead Hospital Front Entrance, follow the signs to the Education Block (approx 20m).

Conference Dinner

A harbour side gala dinner sponsored by Astrazeneca, will be held on Thursday 21 February for all conference delegates. Partners are welcome at a nominal fee. Places are limited, so please register for the dinner early to avoid disappointment.

Venue: The Malaya Restaurant, 39 Lime Street, King Street Wharf, Sydney

Time: 7pm for a 7.30pm start



Registration Fees

Full 2 Day Registration	Before 14th December	Before 25th January	After 25th January
Physician	\$480	\$560	\$650
Trainee	\$350	\$420	\$510
Nurse (includes Wednesday 20th)	\$300	\$370	\$460

Full 2 Day Registration includes: coach transfers from Sydney to Westmead Hospital. Pick up point Four Points by Sheraton Hotel, Sussex Street, Darling Harbour.

1 Day Registration	Before 14th December	Before 25th January	After 25th January
Physician	\$300	\$340	\$400
Trainee	\$200	\$240	\$300
Nurse (includes Wednesday 20th)	\$150	\$200	\$250

1 Day Registration includes: coach transfer from Sydney to Westmead Hospital. Pick up point Four Points by Sheraton Hotel, Sussex Street Darling Harbour.

1/2 Day Registration (Nurses Only Wednesday afternoon)	Before 14th December	Before 25th January	After 25th January
Nurse	\$ 50	\$ 80	\$120

Official Conference Dinner Thursday 21st February	Before 14th December	Before 25th January	After 25th January
Registrant	\$ 40	n/a	\$ 60
Partner	\$100	n/a	\$120

**Space in the Auditorium is limited, please register early to avoid disappointment.
Registration numbers for nurses have been limited to 60.**

How to Register

Complete the Registration Form overleaf and fax to 07 3337 9855

or
Register securely on line at www.e-Kiddna.com.au/westendoreg